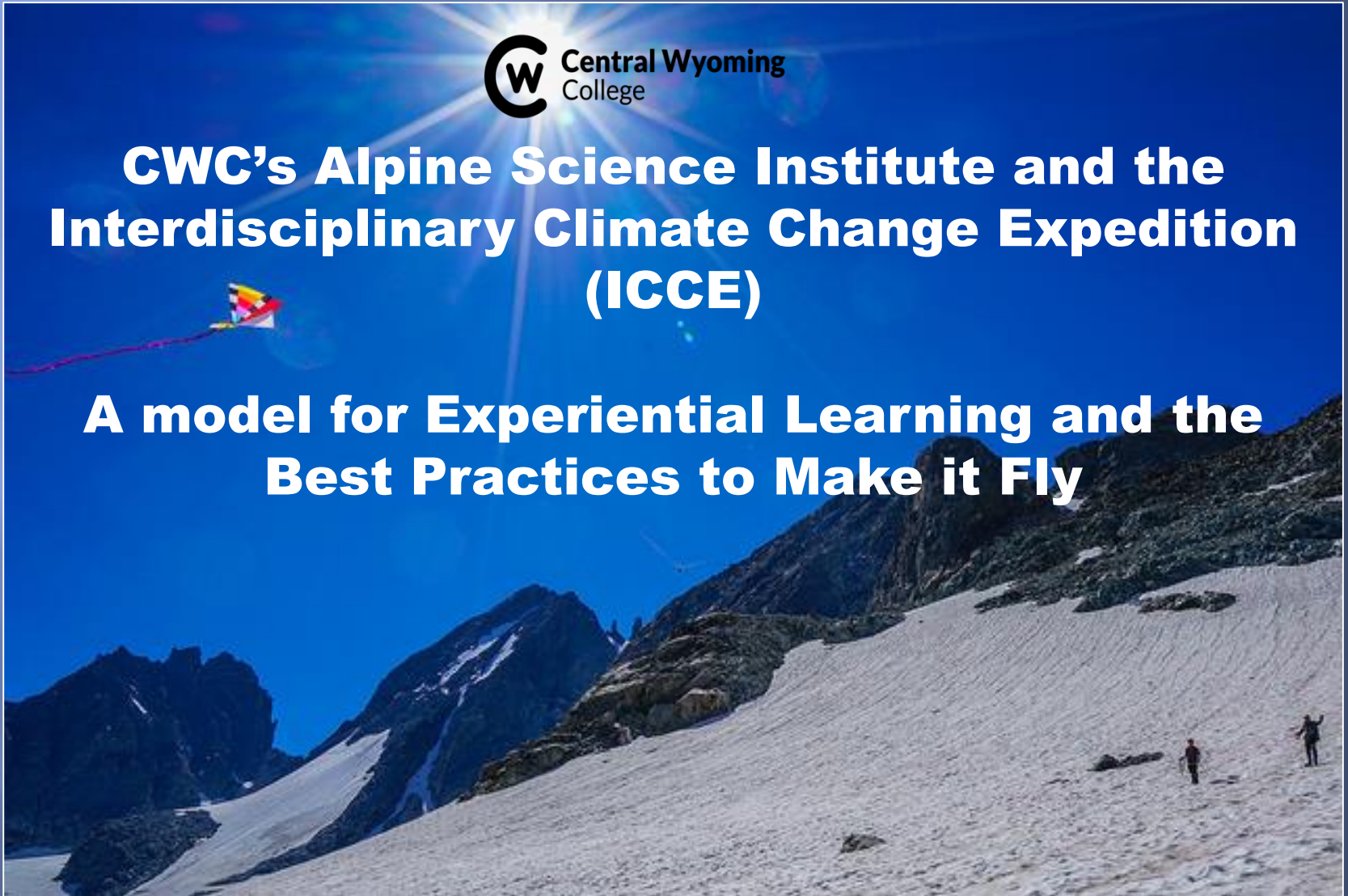
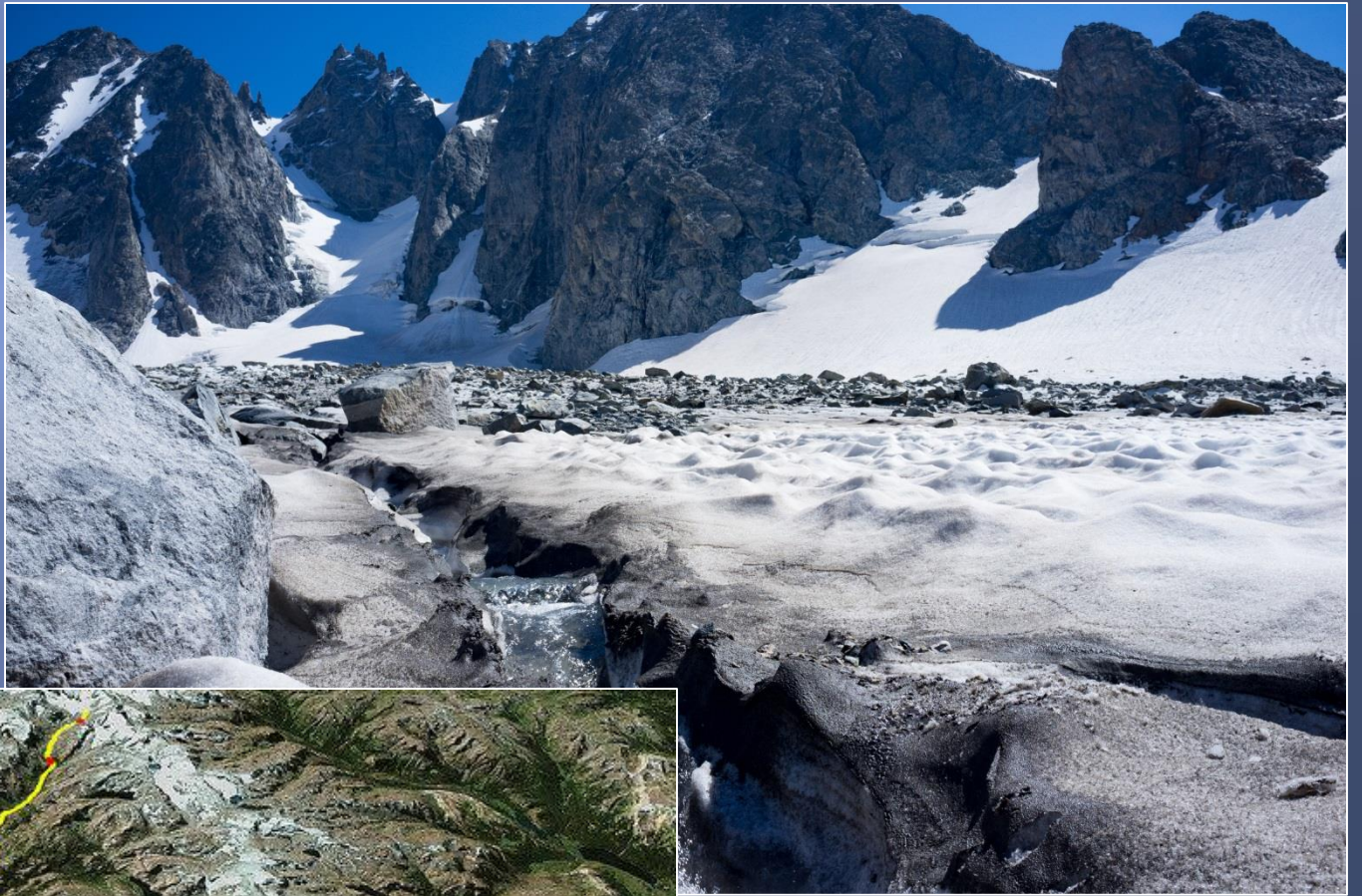




CWC's Alpine Science Institute and the Interdisciplinary Climate Change Expedition (ICCE)

**A model for Experiential Learning and the
Best Practices to Make it Fly**





ICCE is:

- ▣ **An experiential educator's nirvana**
- ▣ **An adventure**
- ▣ **Sound research**
- ▣ **A model**



Nirvana

**High Elevation
Archaeology**



**Geospatial
Technologies**

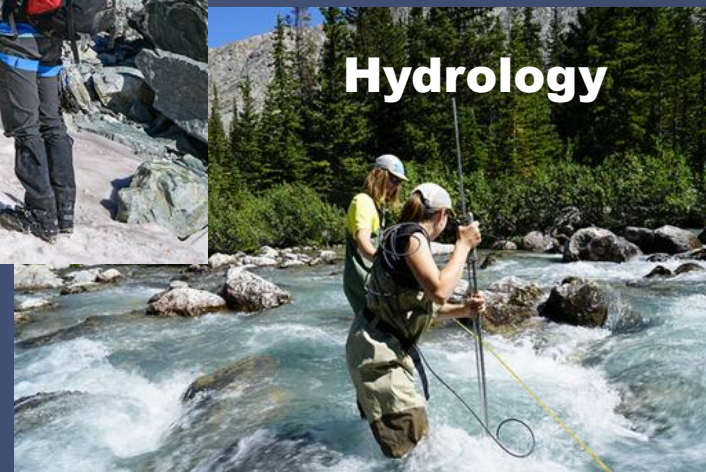


Glaciology

**Outdoor Education
Skills**



Hydrology



The Alpine Science Institute

Our Backyard Classroom



An Adventure



on Exciting Ground



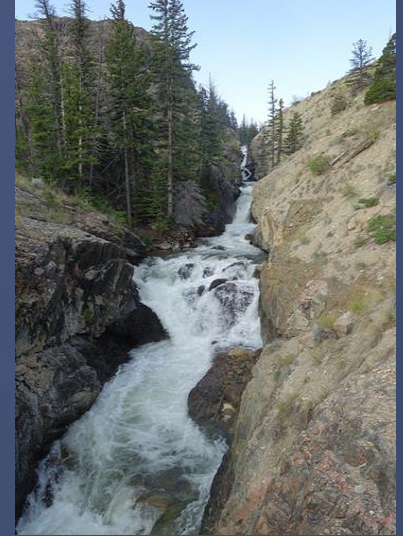
**"If the mountain
won't come to
Muhammad then
Muhammad must go
to the mountain."**

ICCE Best Practices TO BEST SERVE STUDENTS



- **Common Ground and Shared Passions**
- **Complimentary Styles and Skills**
- **Sound Science**
- **Partnerships**
- **Innovation**
- **Vision for the Future**

Find your **HAPPY PLACE**



Common Ground

Interdisciplinary is Interpersonal

**You cannot force a leadership team, but
you can
foster one**



**Complimentary
Styles and Skills**

And Can Lead One....



WORK and PLAY WELL WITH OTHERS



SHARE your TOYS



Do what you LOVE



Shared Passions

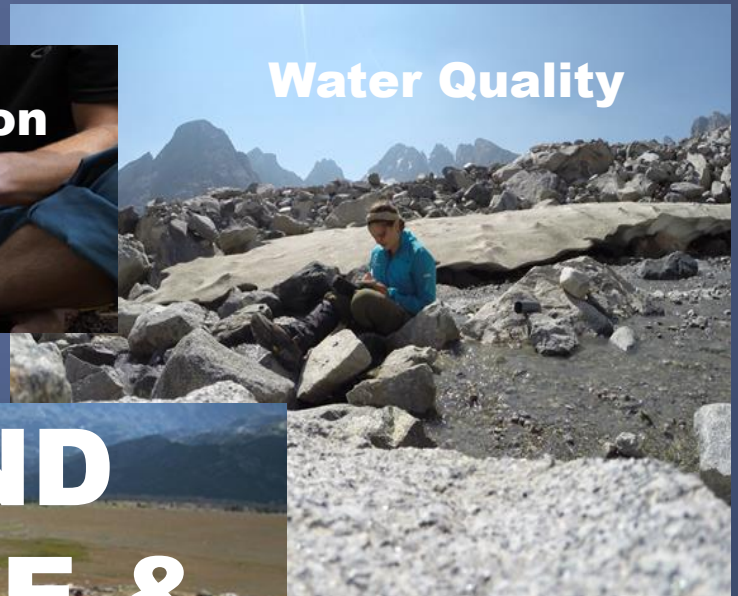
Glacial Ice Depth



Black Carbon



Water Quality



SOUND SCIENCE & SKILLS

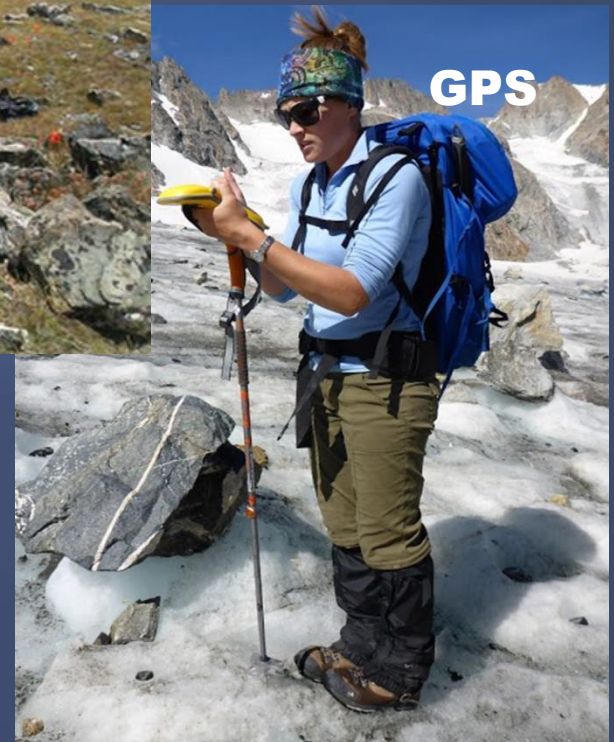
Water Quantity



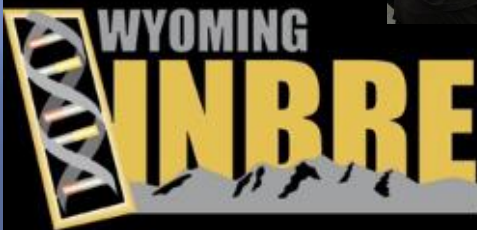
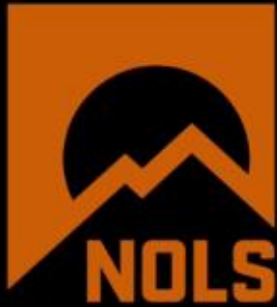
Archaeology



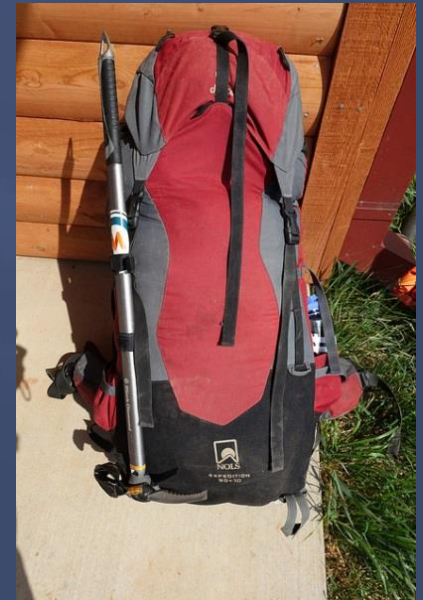
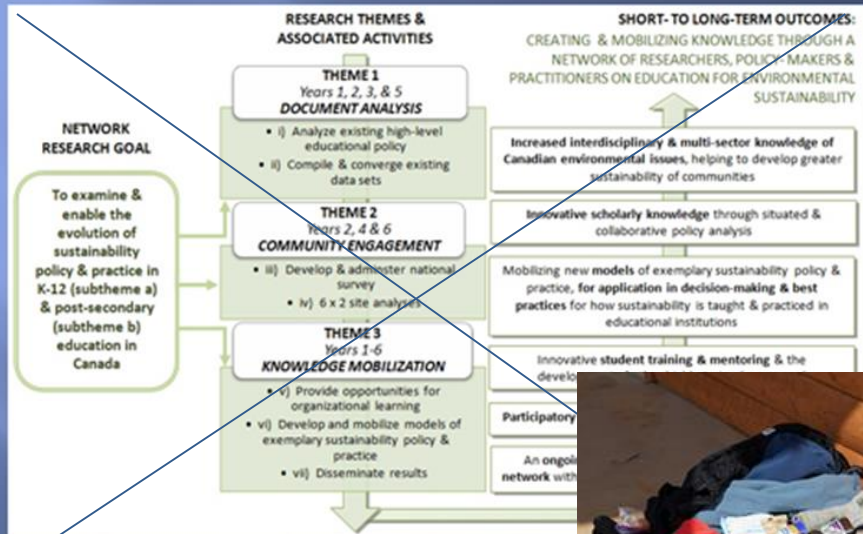
GPS



Partnerships



A model must be Replicable



Some Models Require Flexibility



My Role with ICCE and Alpine Science Institute





A satellite map of a mountainous region. A yellow line outlines a trail that starts at a point labeled 'Trailhead' at the top and winds down a steep, rocky slope. To the left of the trail, a large, light-colored glacier is visible, labeled 'Dinwoody Glacier'. The terrain is rugged with various peaks and valleys. Several green triangle markers are scattered across the map, likely indicating specific points of interest or landmarks. A copyright notice '© 2015 Google' is visible near the bottom center.

Trailhead

**Dinwoody
Glacier**

© 2015 Google

Go



OUTDOOR ADVENTURE EDUCATION

Uses *risk* and *challenge* to teach:

- **Leadership**
- **Natural History**
- **Outdoor Skills**











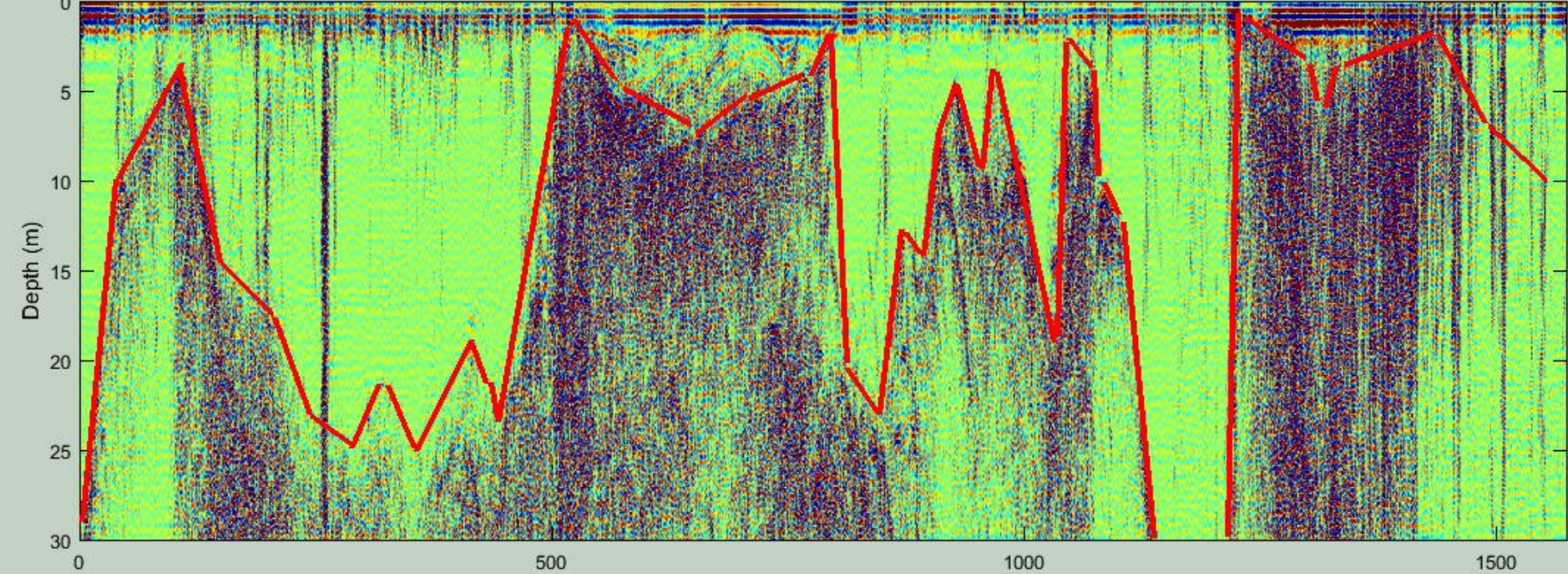












 Sensors & Software Inc.
Ground Penetrating Radar (GPR) Technology



Legend

-  LINE1
-  Start
-  Stop

1935



2016



Keys to Success

1. Unique location / Novel experience
2. Strong trust and confidence between faculty peers
3. Administrative support
4. Pre-expedition skill training
5. Student ownership and leadership
6. Genuine risk and challenge





Best Student Research Paper

Wyoming Assoc. of Professional Archaeologists conference
May 2017























48FR7682-4799652	AMS-Standard delivery	(Wood): Acid/Alkali/Acid	1940 +/- 30 BP	Cal AD 5 to 125 (Cal BP 1945 to 1940)
48FR7682-4799488#2	AMS-Standard delivery	(Wood): Acid/Alkali/Acid	1950 +/- 30 BP	Cal BC 20 to 10 (Cal BP 1970 to 1980) Cal AD 0 to 90 (Cal BP 1950 to 1860) Cal AD 100 to 125 (Cal BP 1850 to 1825)
48FR7682 Wood#3 4799659N	AMS-Standard delivery	(Wood): Acid/Alkali/Acid	1390 +/- 30 BP	Cal AD 610 to 670 (Cal BP 1340 to 1280)
48FR7682 Wood#2 4799488N	AMS-Standard delivery	(Wood): Acid/Alkali/Acid	2090 +/- 30 BP	Cal BC 195 to 40 (Cal BP 2145 to 2005)
48FR7682 Wood#1 4799572N	AMS-Standard delivery	(Wood): Acid/Alkali/Acid	1220 +/- 30 BP	Cal AD 690 to 750 (Cal BP 1260 to 1190) and Cal AD 760 to 885 (Cal BP 1165 to 1065)

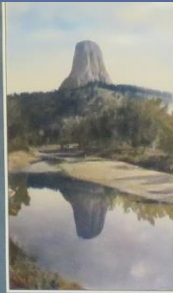


RE: Morgan, Losey & Trout, Late-Holocene paleoclimate and treeline fluctuation in Wyoming's Wind River Range, USA, 2015



An Unbroken Circle

WYOMING ARCHAEOLOGY AWARENESS MONTH • SEPTEMBER 2004



Sacred Places

WYOMING ARCHAEOLOGY AWARENESS MONTH • SEPTEMBER 2004



Mysteries of the Past

WYOMING ARCHAEOLOGY AWARENESS MONTH • SEPTEMBER 2004



Picture the Past

WYOMING ARCHAEOLOGY WEEK

SEPTEMBER 1-5, 2004

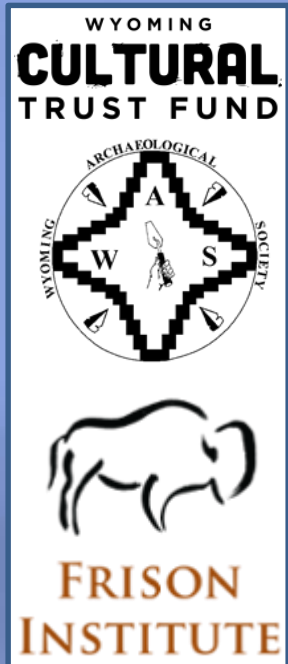


Nelson White III, Best Student Paper
Wyoming Assoc. of Professional Archaeologists conference, 2016

A woman with dark hair, wearing a black sleeveless top with white piping, stands at a wooden podium. She is looking down at a microphone. The podium has a plaque that reads "LITTLE AMERICA Ford". Behind her is a large projection screen displaying a snowy mountain landscape. The text on the screen reads "Students on Fire: An Adventure on ICCE Interdisciplinary Climate Change Expedition". A logo for "CW Center for the West" is visible in the bottom right corner of the screen.

Students on Fire: An Adventure on ICCE Interdisciplinary Climate Change Expedition





FRISON
INSTITUTE



THANK YOU!



INNOVATION And VISION FOR THE FUTURE



CC Researchers on the Edge –

A Tool to Teach other Faculty and Students



A Foundation upon which to expand Existing Partnerships